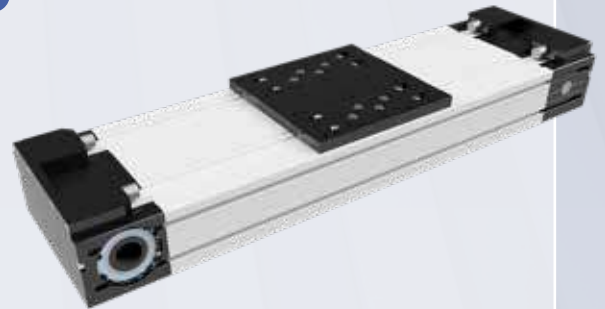


LTY200 SERIES

Linear units with toothed belt drive
and double rail guide system



- Extrusion profile 80 x 200 mm
- Rail Guide system size -20- with 4 LM blocks
- Very heavy load capacity
- Double Toothed belt type AT10, 32mm wide

TECHNICAL DATA

LTY200

Maximum stroke length	mm	5.500
Maximum speed	mm/s	3.000
Maximum acceleration	m/s ²	30
Max. driving torque	Nm	110
Repeatability	mm	± 0,1
Movement per revolution	mm	200

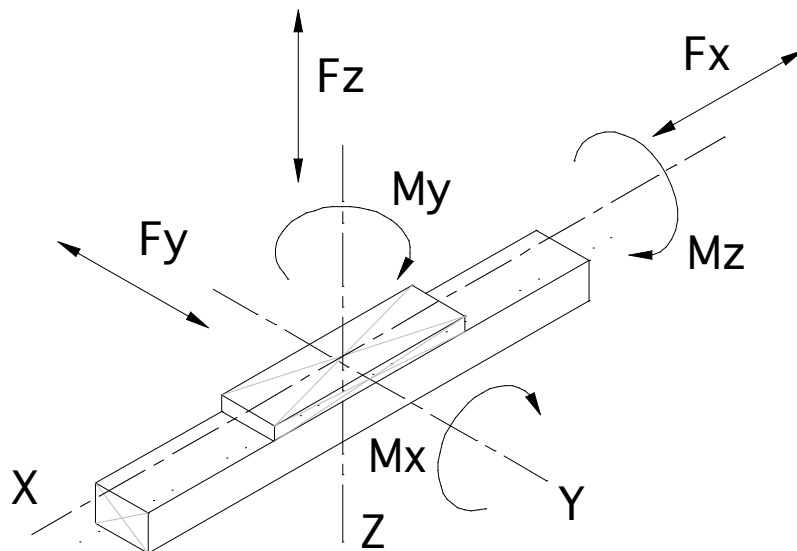
LTY200 SERIES

TECHNICAL DATA*

LOAD CAPACITY LTY200

Mx	Nm	1.600
My	Nm	1.700
Mz	Nm	1.250
Fx	N	5.000
Fy	N	14.800
Fz	N	14.800

*Please ask us for specific calculations of the guide system.



WEIGHTS (KG)

LTY200

Unit weight 0 mm stroke	6,45
Weight per 100 mm stroke	1,05
Mass of carriage	0,90

LTY SERIES

DIMENSIONS

DIMENSIONS LTY200

